



M2M DEVICE MANAGER[®]

Central management software for M2M Router[®] routers

Central server application, which provides the management of thousands of M2M Router[®] devices.

The main goal of the software is to check the availability and accessibility of the devices and the quality of mobile network connection. Stores all parameters of the devices into a database, and is able to upload a custom setting to all endpoints - or a group of devices.

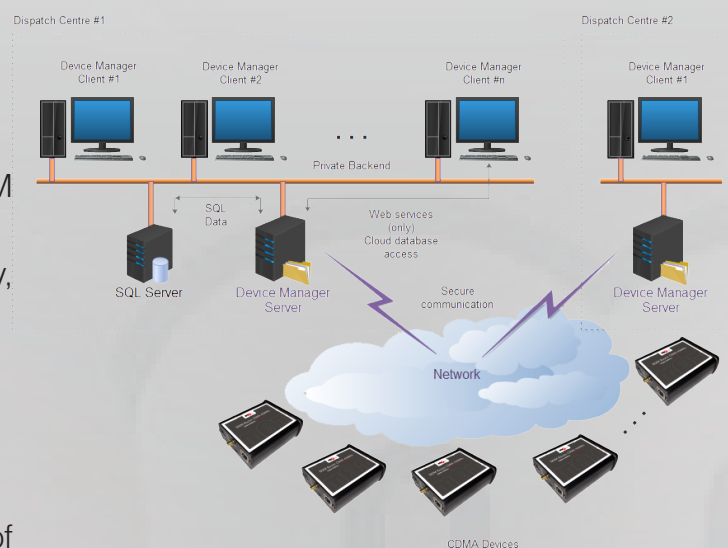
Supports to refresh the firmware of the selected devices from the centre.

Software features

- Client & server application for managing M2M Router[®] devices
- Monitoring the M2M Router[®] devices (availability, wireless signal strength)
- Define and monitor Alarm events
- Configure and store the device parameters
- Central software distribution
- Track software releases with SNMP Manager
- Validate the compatibility and interoperability of software versions
- User and Device Management

Security

- SQL database
- System monitoring
- Data encryption
- Event viewer, Event log

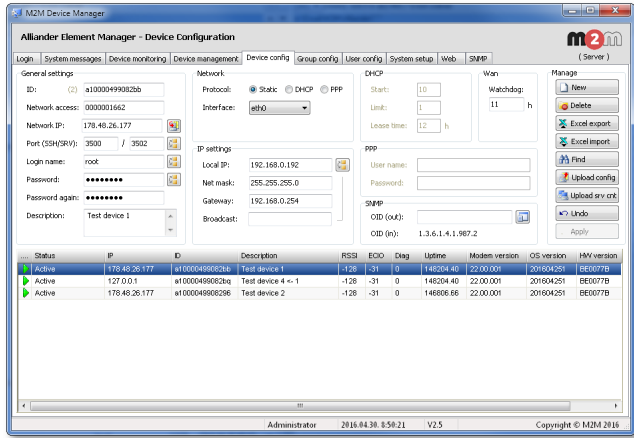


Application

- ▶ Service providers
- ▶ Utility companies
- ▶ Energy distribution companies
- ▶ Smart Grid infrastructure
- ▶ Software maintenance
- ▶ Remote Monitoring
- ▶ Dispatching, Call center

Remote Element Management

Managing objects, configure groups, users and devices



Device configuration

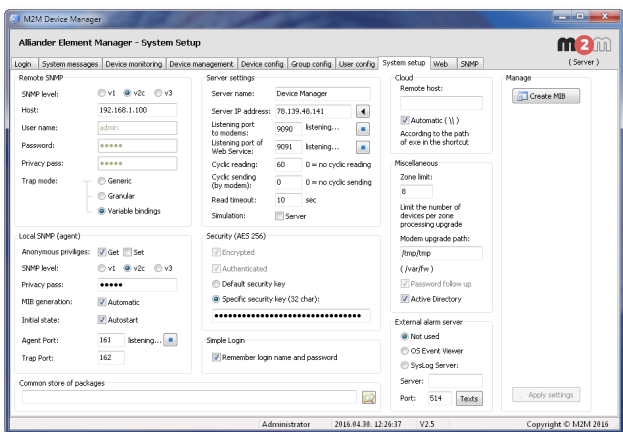
Network elements, building infrastructure from endpoint devices, parametrizing, modify data

Device Management

Upload configuration, store the device settings, managing devices (restart, reboot)

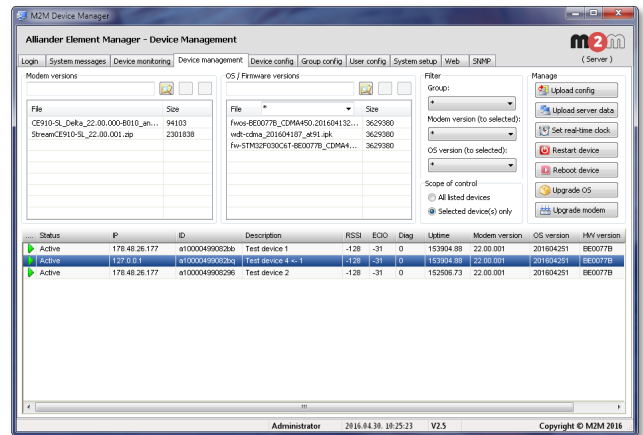
Monitoring

Activities, availability, wireless network signal strength, software distribution success



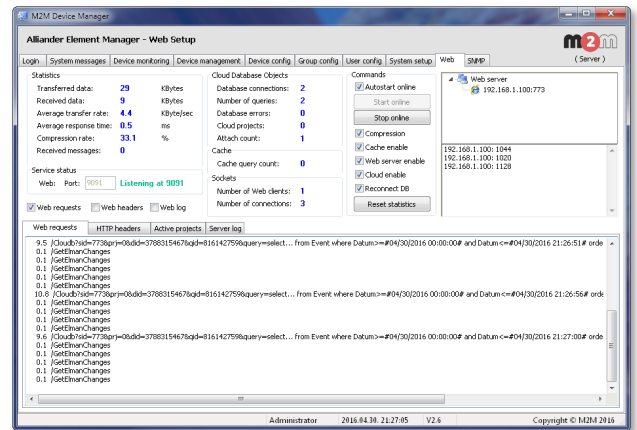
Software Deployment

Installing devices, firmware upgrades and managing the software updates, define availability check frequencies, check integrity



Alarms, Events

Define alarms of event types, notify users, record the occurred events, log the activities, supporting the Dispatching centre and Call Center



Supported systems

The element management software supports the Microsoft Windows operating systems and Active Directory services.